

ITEM 24. CAR SHARE – CHALLIS AVENUE POTTS POINT

TRIM RECORD NO: 2016/227939

RECOMMENDATION

It is recommended that the Committee endorse the reallocation of parking on the northern side of Challis Avenue, Potts Point, between the points 43.4 metres and 48.4 metres (one car space) west of Macleay Street as “No Parking Car Share Vehicles Excepted” subject to the following:

- (A) The City will only install signage for the car share space when GoGet has a car to occupy the space.

VOTING MEMBERS FOR THIS ITEM

<i>Voting Members</i>	<i>Support</i>	<i>Object</i>
City of Sydney		
Roads and Maritime Services		
NSW Police – Kings Cross LAC		
Representative for the Member for Sydney		

DECISION

BACKGROUND

The City is committed to providing dedicated parking for car sharing across the Local Government Area as part of a Council-approved Car Share Policy. A submission has been received from GoGet for a car share space in Challis Avenue, Potts Point, west of Macleay Street.

COMMENTS

The kerb space on the northern side of Challis Avenue, Potts Point, west of Macleay Street, is currently signposted as “1P 8am-10pm Mon-Fri Permit Holders Excepted Area 19”.

The car share space will be installed and managed in accordance with the Roads and Maritime Service’s Technical Direction 2007/04 and the provisions of the Council-approved Car Share Policy.

Car sharing is popular in more than 600 cities worldwide, and research has shown substantial environmental benefits. Car sharing reduces total urban driving, reduces household vehicle holdings, and increases walking, cycling and public transport use.

On average, each car share vehicle in the City can replace up to 12 private vehicles that would otherwise compete for parking.

Current membership is approximately 29,084, of which 8,356 are business members.

As of April 2016, there were 138 GoGet car share members within a 250 metre radius of this location with 33 members in Challis Avenue, 88 members in Macleay Street and one member in Rockwall Crescent.

Within a 250 metre radius of this location, there is currently 12 spaces allocated for GoGet car share vehicles.

CONSULTATION

The City consulted local residents and businesses in the area. There were 256 letters sent out with six responses supporting the proposal and three responses opposing the proposal.

FINANCIAL

Funds are available in the current budget.

ATTACHMENTS

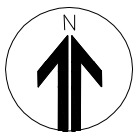
Car Share – Challis Avenue Potts Point

John Dau, Graduate Traffic Engineer



Source: Dekho – 15 April 2016

xxxxxxx	<u>Existing</u> No Stopping		<u>Existing</u> 1P 8am-10pm Mon-Fri Permit Holders Excepted Area 19
	<u>Existing</u> 2P 8:30am-6pm Mon-Fri		<u>Proposed</u> No Parking Authorised Car Share Vehicles Excepted Zone GG (One Car Space)
	<u>Existing</u> Loading Zone 8.30am-4pm Mon-Fri		



PROPOSAL

CHALLIS AVENUE, POTTS POINT
PROPOSED CAR SHARE



